

**Vision is
our mission[®]**



**ON ROAD TRUCKS
VISION SOLUTIONS**

See more
Work more



3

Why Orlaco

6

Vision solutions

16

Products

39

Certification

Truck	6
Rigid truck	7
Truck-trailer combination	8
Rigid-trailer combination	9
Heavy haulage combination	10
Bulk / Tank truck	11
Concrete truck	12
Refuse truck	13

Tipper truck	14
Bus	15



Why Orlaco?

Welcome to the Orlaco product catalogue. We are personally committed to bringing you the best camera and monitor solutions possible. To help create safer and more secure workplaces around the world. Our professional team has spent over twenty-five years designing and manufacturing a variety of certified, reliable and complete camera display solutions that effectively eliminate the blind spots around vehicles, machinery and vessels. We are confident that the options offered in this catalogue will not only help you to improve the safety, security and efficiency of your fleet, but also to enhance the ergonomics and comfort for your operators. That is what Orlaco stands for. We invite you to share your ideas and experiences with us.

That's why!

Let us **improve** your every day job



Improved Safety and Efficiency

Enhanced Ergonomics and Comfort

Certified Quality

Traffic is becoming increasingly busier. Not only are you expected to have a good view of the situation, but you are also expected to arrive at your destination safely, on time, and without damage. Good visibility around your truck is not possible without help. Orlaco's vision solutions improve the efficiency of your actions. No longer will you have to get out of your vehicle to determine the distance each time you load and unload. This could result in immediate economic benefits. An Orlaco camera system enables you to do your job more efficiently while reducing your risk of overlooking someone or something. Less risk and improved safety and efficiency.

Good posture is just as important as good visibility. TNO asked Orlaco to produce a report on the optimum position for a cab monitor. This report takes into consideration details like the diagonal size of the image on the monitor, the position of the mirrors, the windscreen and the driver. These test results have been included in the installation manual for each system. They ensure that operators can carry out their work ergonomically, without the need for additional stretching or straining.

At Orlaco, quality is never taken lightly. We keep a clear and persistent focus on customer satisfaction. A focus that is maintained throughout the manufacturing process of our quality products, which are custom designed in various formats. We are able to uphold our level of quality by providing detailed servicing. To top it all off, we have secured the highest achievable automotive certification: TS16949. At Orlaco, we invest in continuous improvement in order to secure a long term, satisfied customer base. We believe that compatibility in products, systems, and operations is the key element to creating reliable partnerships. All our products are controlled and clearly documented to give our customers a zero-defect product with operation that works right, every time.



Why Orlaco

Why Orlaco

Sideview



PAGE 16

The Orlaco Sideview camera provides the required visibility at the side of the truck. A quick look at the monitor and you will know whether you can drive off safely without overlooking a cyclist, pedestrian, or car. The Sideview camera also improves safe lane-changing.

The monitor can be integrated or surface-mounted, depending on the vehicle. It is also equipped with handy options, such as automatic brightness adjustment. No matter how brightly the sun is shining or how dark it is outside, you always have good visibility.



Frontview



PAGE 17



Frontview



PAGE 17

The Orlaco Frontview camera provides the required visibility at the front of the truck. One quick glance at the monitor and you will see whether you can safely drive off without colliding with a cyclist, pedestrian, or car.



Rearview



PAGE 16

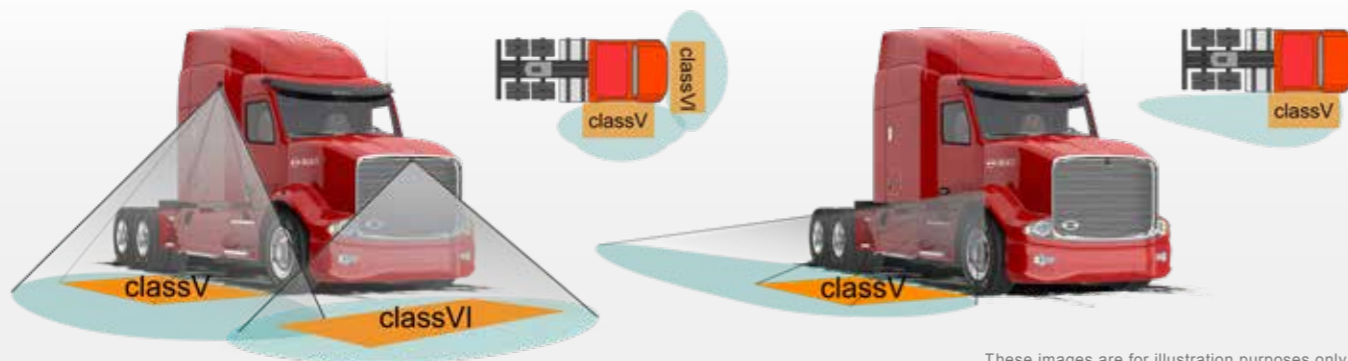
The Rearview camera lets you see the area directly behind the truck. The monitor in the cab automatically switches over to this camera if you select a reverse gear, allowing you to reverse safely.

Recommendation: Add RadarEye to increase safety & efficiency. (see page 34-35)



i INFORMATION

There are several camera possibilities that could improve the visibility around your truck. Next to the various possibilities of Sideview (Field of vision for Class V close-proximity mirror and larger required view), a camera can also be placed at the front of the truck to cover Class VI. Please contact Orlaco for more information about the vision solutions we provide for on-road trucks.



These images are for illustration purposes only



RadarEye setting: Transparent visualization of the radar-zones on the monitor.

Combined sets

Side-Rearview

PAGE 17

The area beside the truck is not completely visible to the driver. A Sideview camera displays this entire area on the monitor and is therefore of great value. An Orlaco Sideview camera system can be combined with a Rearview camera for even safer reversing and for view on the area behind the truck. Both views can be displayed separately on the same monitor.

Sideview



The Sideview camera provides the required visibility at the side of the truck. A quick look at the monitor and you will know whether you can drive off safely without overlooking a cyclist, pedestrian, or car. The Sideview camera could also make for safer lane-changing.

The monitor can be integrated or surface-mounted, depending on the vehicle. It is also equipped with handy options, such as automatic brightness adjustment. No matter what the conditions outside, sunny, dark or rainy, you could always have optimal visibility.



Camera setting: Horizontal and vertical line marks. With this option the camera on the back of the rigid is also an effective aid when connecting the trailer.

Rearview



The Rearview camera lets you see the area directly behind the truck. The monitor in the cab automatically switches over to this camera view if you select a reverse gear, helping you to reverse safely.

Recommendation: Add RadarEye to increase safety & efficiency. (see page 34-35)

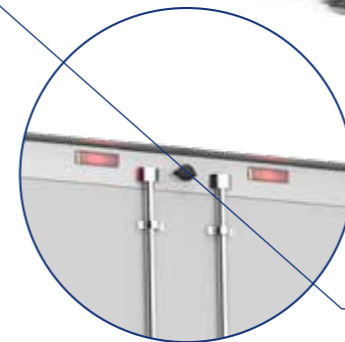


Combined sets

Side-Rearview
PAGE 19

The area beside the truck is not completely visible to the driver. A Sideview camera displays this entire area on the monitor and is therefore of great value. An Orlaco Sideview camera system can be combined with a Rearview camera for even safer reversing and for view on the area behind the truck. Both views can be displayed separately on the same monitor.

Frontview



Rearview



The Rearview camera lets you see the area directly behind your truck. The monitor in the cab automatically switches over to this camera view if you select a reverse gear, allowing you to reverse safely. The rear view camera on the rigid provides visibility when the trailer is not connected. Orlaco has special cable sets (with or without spiral interconnection) for Rearview cameras on your rigid and trailer.

Recommendation: Add RadarEye to increase safety & efficiency. (see page 34-35)



Camera setting: Horizontal line mark. This option shows a reference line on the monitor.

Trailer switcher

0405600 - PAGE 37



The switcher is included in the special cable set. The Orlaco trailer switcher ensures that the monitor automatically displays the rearmost camera. This is one less thing for your to think about, helping you to reverse the entire combination safely.

Sideview



PAGE 16

The Sideview camera provides the required visibility at the side of the truck. One quick glance at the monitor and you will see whether you can drive off safely without overlooking a cyclist, pedestrian, or car. The Sideview camera could also help you change lanes safely.

The monitor can be integrated or surface-mounted, depending on the vehicle. It is also equipped with handy options such as automatic brightness adjustment. No matter how brightly the sun is shining or how dark it is outside, you will have optimum visibility.



Frontview



PAGE 17



Axle view



Get a safe view of the axles. Truck combinations must comply with very specific safety requirements. Although a camera system is not mandatory, it certainly adds significant value. Please contact Orlaco for a system that could be tailored to your requirements.



Combined sets

Side-Rearview

PAGE 20-21

You cannot always see what is happening beside the truck. In that instance, a Sideview camera is the solution. The Orlaco Sideview camera system can be combined with a Rearview camera for safer reversing and seeing what is happening beside the truck. This makes optimum use of your monitor and could even improve your safety.

Rear/Sideview



PAGE 20-21

Extra visibility when maneuvering and swinging out is essential. As you enter farmyards, for example, you have to be able to maneuver accurately between the farmhouse and the sheds, which often have low roofs. The outer mirrors do not provide a direct view of the side of the trailer when turning or backing up. It is important for you to be able to see whether you can swing the rear of your vehicle out safely. Orlaco's Sideview camera could provide a much clearer image when backing up or turning in tight spaces.



Rearview



PAGE 18-21

The Rearview camera lets you see the area directly behind the truck. The monitor in the cab automatically switches over to this camera view if you select a reverse gear, allowing you to reverse safely.

Recommendation: Add RadarEye to increase safety & efficiency. (see page 34-35)



Sideview



PAGE 16

The Sideview camera provides the required visibility at the side of the truck. A quick look at the monitor and you will know whether you can drive off safely without overlooking a cyclist, pedestrian, or car. The Sideview camera could also make for safer lane-changing.

The monitor can be integrated or surface-mounted, depending on the vehicle. It is also equipped with handy options such as automatic brightness adjustment. No matter how bright or dark it is outside, you always have good visibility.



Loadview



View your work continuously. With an Orlaco camera system you can see and control the process from the cabin, potentially increasing productivity and reducing the risk of errors and damage.



CornerEye



PAGE 23

CornerEye offers a complete and detailed view of 270° of the area around the cabin. The system delivers HD digital image quality in real time.



Rearview



PAGE 16

The Rearview camera lets you see the area directly behind the truck. The monitor in the cab automatically switches over to this camera view if you select a reverse gear, allowing you to reverse safely.

Combined sets

Side-Rearview

PAGE 17

You cannot always see what is happening beside the truck. Then, a Sideview camera is the solution. An Orlaco Sideview camera system can be combined with a Rearview camera for safer reversing and visibility behind the truck. This makes optimum use of your monitor and could even improve your safety.



Rearview



PAGE 16

The Orlaco Rearview camera lets you see the area directly behind your truck. Our Rearview camera is a perfect solution for a back loader refuse truck; then you can follow the process safely from the cabin. This could increase your productivity and reduce the risk of errors and damage.



INFORMATION

Vehicles used in the environmental sector often operate in busy residential areas. Within this sector, the problem of blind spots is a crucial issue. It is therefore logical that cameras should be mandatory on the back of refuse collection vehicles. Our cameras enable the driver to not only keep sight of the situation behind the truck, but also to maintain visual contact with the loaders. Orlaco cameras also provide visibility around side loaders, street sweepers, drain cleaning vehicles, and container trucks.

Dump truckview - Rearview



To keep a sharper eye on the load, the solution is to install a camera in the dump truck. An Orlaco camera provides an accurate indication of whether your vehicle is positioned correctly, and whether the container is sufficiently filled.

Put simply: it eliminates the need for extra staff and you, the operator, can stay safely in your seat. Our cameras are heated and waterproof (IP69K). Additionally, they can be cleaned with a high pressure washer.



Rearview



PAGE 16

The Rearview camera lets you see the area directly behind the truck. The monitor in the cab automatically switches over to this camera view if you select a reverse gear, allowing you to reverse safely.

Recommendation: Add RadarEye to increase safety & efficiency. (see page 34-35)



Combined sets

Side-Rearview

PAGE 17

You cannot always see what is happening beside the truck. Then, a Sideview camera is the solution. An Orlaco Sideview camera system can be combined with a Rearview camera for safer reversing and visibility behind the truck. This makes optimum use of your monitor and could even improve your safety.

Sideview



PAGE 16

The Orlaco Sideview camera provides the required visibility at the side of a bus. When approaching a bus stop along the street or at a school, the Sideview camera could ensure that no passengers are overlooked. This solution can also be combined with our Rearview system.



Rearview



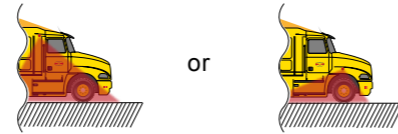
PAGE 16

The Orlaco Rearview camera lets you see the area immediately behind the bus. The monitor in the cab automatically switches over to this camera view if you select a reverse gear, allowing you to reverse safely.



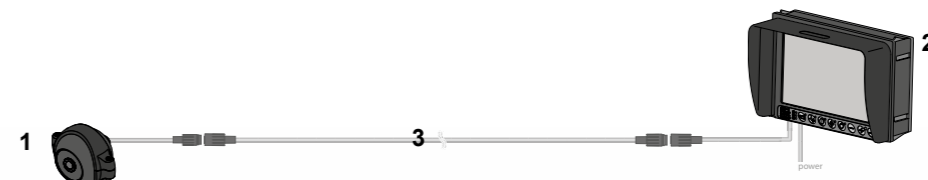
Set Sideview

- 1. Camera HMOS 120° incl. bracket
0185010 - page 25
- 2. Monitor HLED 10" MR1
0224000 - page 30
- 3. GMSL cable
Make your choice - page 26



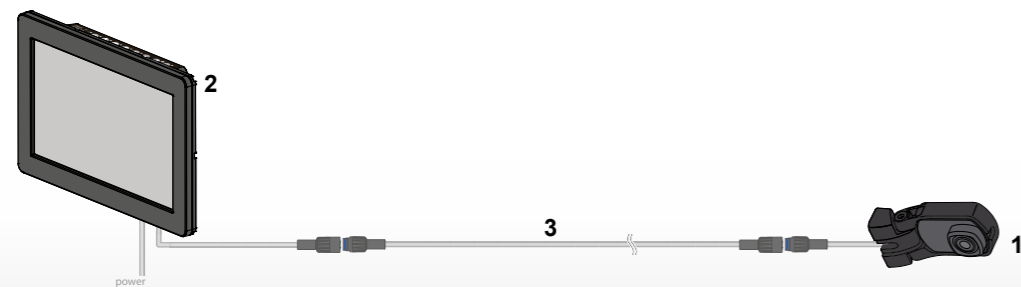
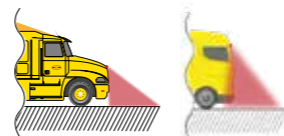
Set Rearview on Rigid (0407410)

- 1. Camera FAMOS 102°
0171120 - page 24
- 2. Monitor 7" LEDD
0208203 - page 29
- 3. Multi cable 5m
0301880 - page 26



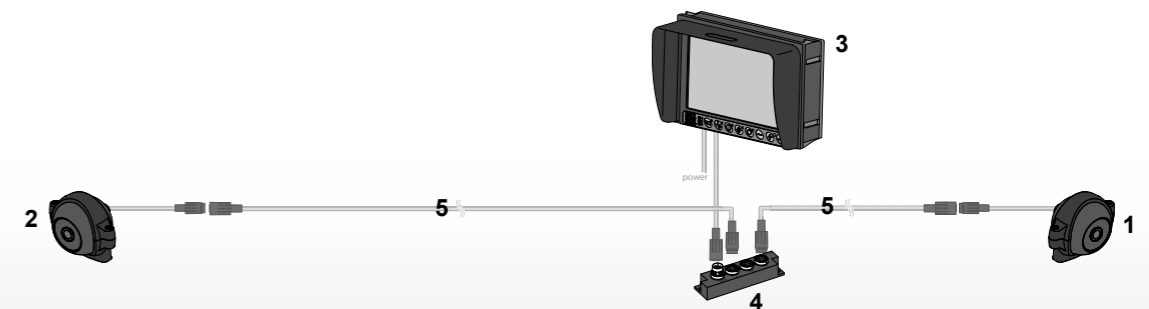
Set Frontview

- 1. Camera HMOS 180° incl. bracket
0185510 - page 25
- 2. Monitor HLED 10" MR1
0224000 - page 30
- 3. GMSL cable
Make your choice - page 26



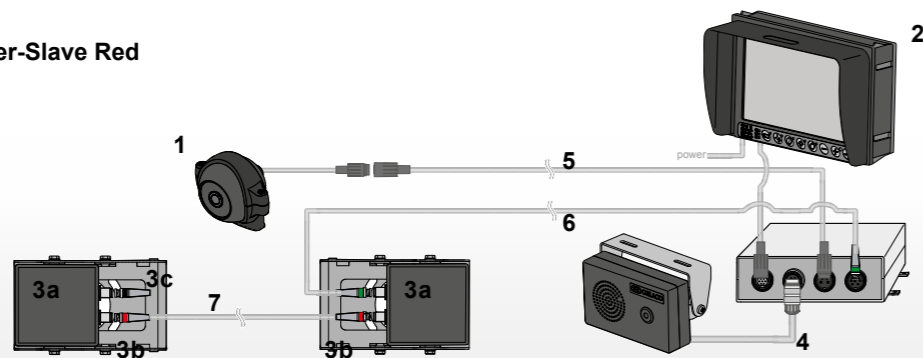
Set Sideview-Rearview on Rigid (0407430)

- 1. Camera FAMOS 129° (side)
0171100 - page 24
- 2. Camera FAMOS 102° (rear)
0171120 - page 24
- 3. Monitor 7" LEDD
0208203 - page 29
- 4. Switcher
0404040 - page 37
- 5. Multi cables
0301880 - page 26



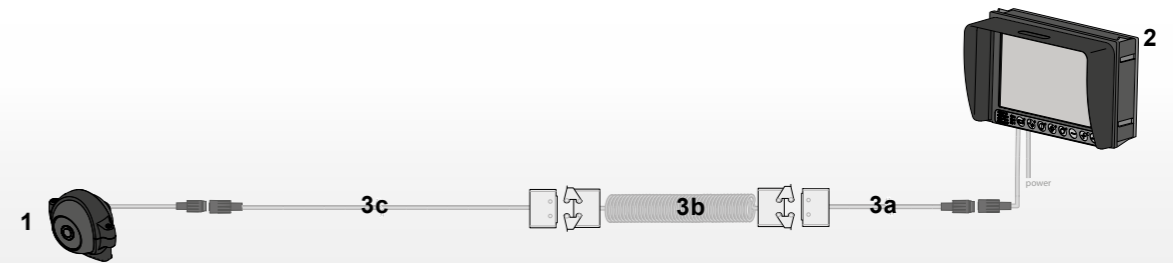
Set **Rearview on Rigid + RadarEye**

1. Camera FAMOS 102°
0171120 - page 24
2. Monitor 7" LEDD CAN SRD
0208371 - page 25
3. Set SRD Corner Rear
 - a. SRD sensor (2x)
 - b. Bracket SRD sensor Corner rear (2x)
 - c. M12 Terminator 120 Ohm
4. RadarEye Interface Box with ext. speaker
0504820 - page 35
5. Multi cable
Make your choice - page 26
6. RadarEye cable M12 Green
Make your choice - page 35
7. RadarEye cable M12 Master-Slave Red
Make your choice - page 35



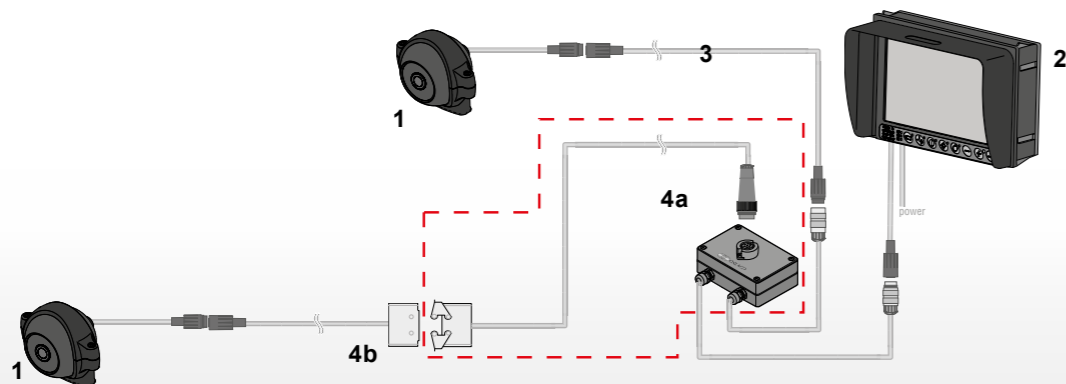
Set **Truck with Rearview on Trailer**

1. Camera FAMOS 102°
0171120 - page 24
2. Monitor 7" LEDD
0208203 - page 29
3. Cable set truck
 - a. Cabin cable 26.2ft
 - b. Spiral cable
 - c. Trailer cable 82ft



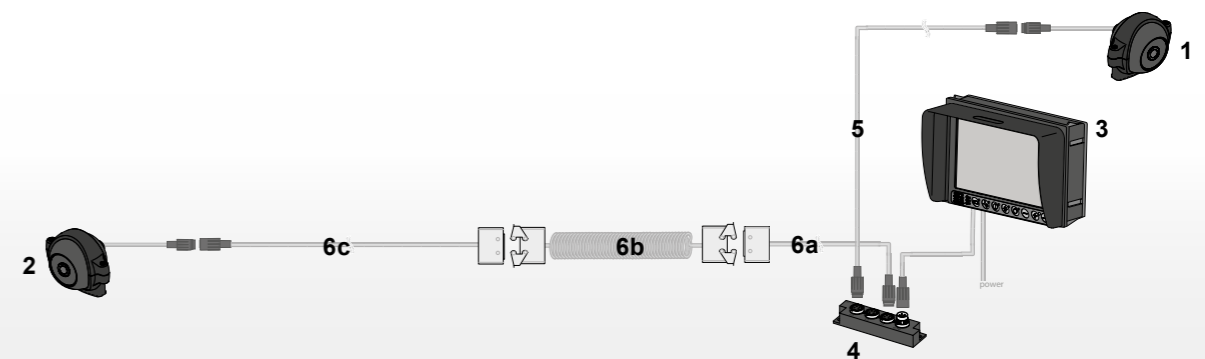
Set **Rearview on Rigid with Rearview on trailer (0407450)**

1. Camera FAMOS 102° (2x)
0171120 - page 24
2. Monitor 7" LEDD
0208203 - page 29
3. Multi cable 5m
0301880 - page 26
4. Cable extension set
 - a. Trailer switcher including rigid cable 52.5ft
 - b. Trailer cable 69ft



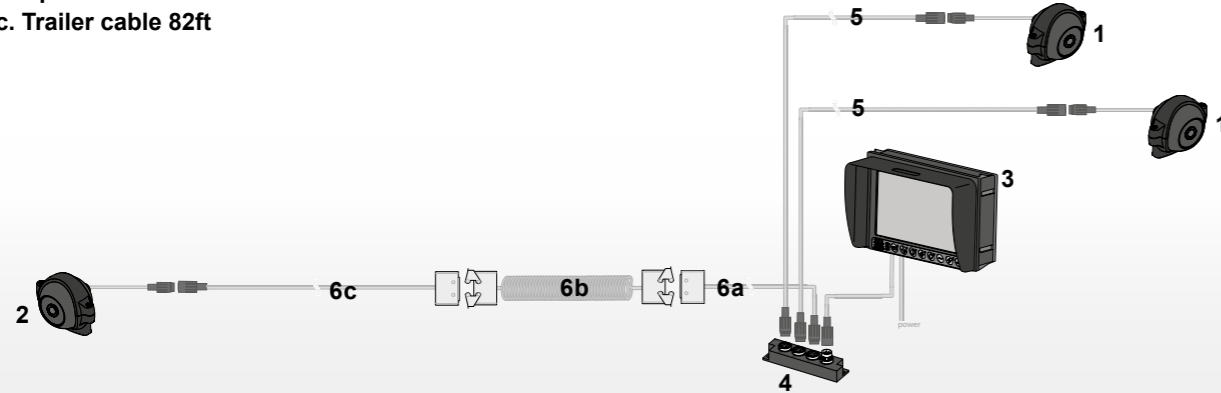
Set **Sideview on Truck with Rearview on Trailer**

1. Camera FAMOS 118° (side)
0171110 - page 24
2. Camera FAMOS 102° (rear)
0171120 - page 24
3. Monitor 7" LEDD
0208203 - page 29
4. Switcher
0404040 - page 37
5. Multi cable 5m
0301880 - page 26
6. Cable set truck
 - a. Cabin cable 26.2ft
 - b. Spiral cable
 - c. Trailer cable 82ft



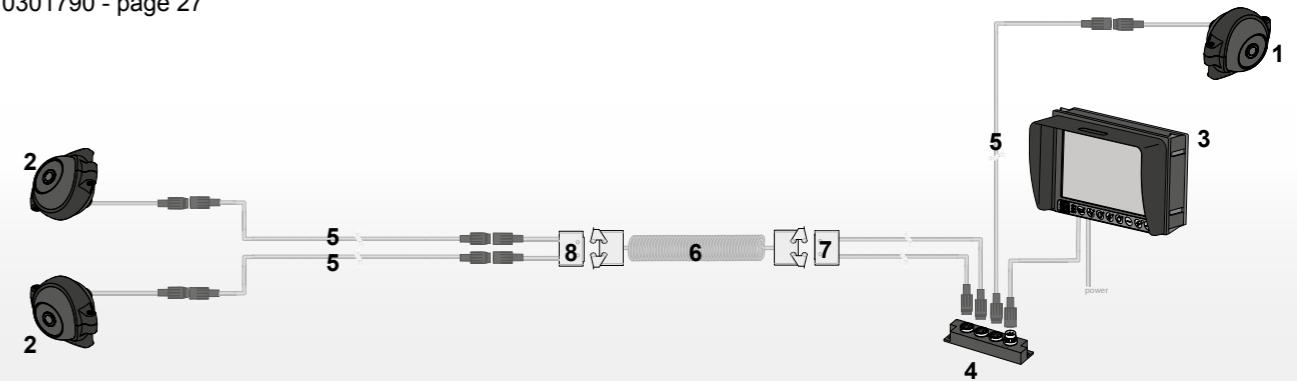
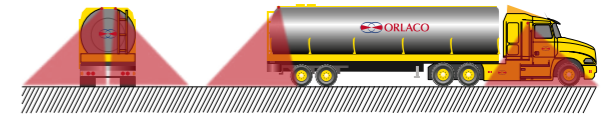
Set Sideview-Frontview on Truck with Rearview on Trailer

1. Camera FAMOS 118° (side and front)
0171110 - page 24
2. Camera FAMOS 102° (rear)
0171120 - page 24
3. Monitor 7" LEDD
0208203 - page 29
4. Switcher
0404040 - page 37
5. Multi cables
0301880 - page 26
6. Cable set truck
0403770 - page 27
 - a. Cabin cable 26.2ft
 - b. Spiral cable
 - c. Trailer cable 82ft



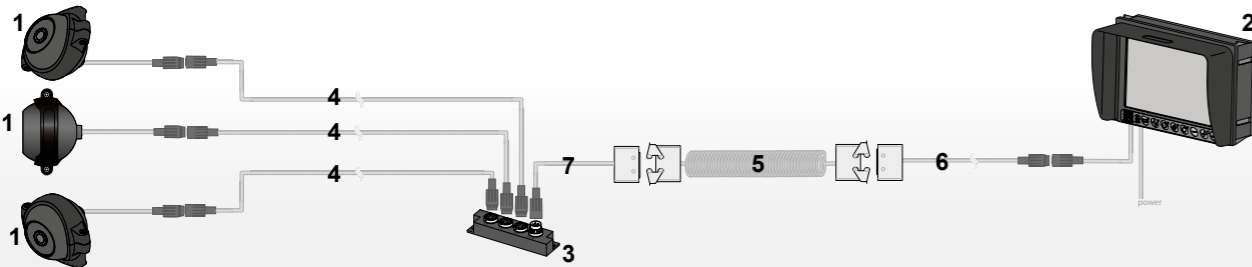
Set Sideview on Truck with 2x Sideview on Trailer

1. Camera AMOS 118° (side)
0171110 - page 24
2. Camera FAMOS 102° (2x)
0171120 - page 24
3. Monitor 7" LEDD
0208203 - page 29
4. Switcher UNI
0404040 - page 37
5. Multi cables (3x)
Make your choice - page 26
6. Spiral cable
0303630 - page 27
7. Cabin 2Cam cable 26.2ft
0301780 - page 27
8. Trailer 2Cam cable 1.5ft
0301790 - page 27



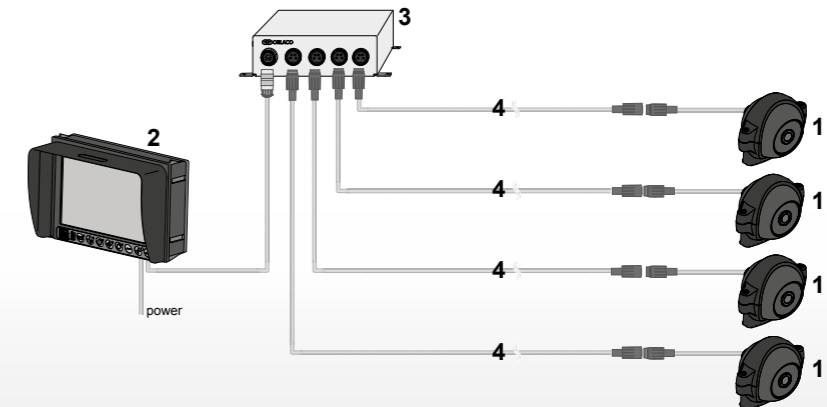
Set Truck with 2x Sideview and 1x Rearview on Trailer

1. Camera FAMOS 102° (3x)
0171120 - page 24
2. Monitor 7" LEDD
0208203 - page 29
3. Switcher UNI
0404040 - page 37
4. Multi cables (3x)
Make your choice - page 26
5. Spiral cable
0303630 - page 27
6. Cabin cable 26.2ft
0304020 - page 27
7. Trailer cable 6.5ft
0301770 - page 27



Set General Multiview system

1. Camera FAMOS
Make your choice - page 24
2. Monitor 7" LEDD Serial
0208232 - page 29
If a non-serial monitor is used,
please use the serial monitor
cable 8976330 - page 30
3. MultiView box II
0405100 - page 37
4. Multi cables
Make your choice - page 26



Set Rearview on Rigid connected to a third party monitor

1. Camera FAMOS 118° MIRROR

0171230 - page 24

2. Multi cable

Make your choice - page 26

3. Adapter cable 4pF

Make your choice:

Navistar / Caterpillar displays T8510 and T8520 0304910 - page 38

Navistar / Caterpillar displays T8065 base/premium) 0304900 - page 38



For more advice about extensions of these systems with a second and third camera, please contact Orlaco.

Set Truck with Rearview on Trailer connected to a third party monitor

1. Camera FAMOS 118° MIRROR

0171230 - page 24

2. Cable set truck

0403770 - page 27

a. Cabin cable 26.2ft

b. Spiral cable

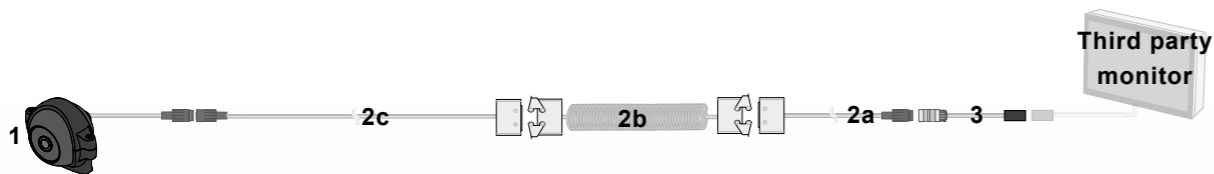
c. Trailer cable 82ft

3. Adapter cable 4pF

Make your choice:

Navistar / Caterpillar displays T8510 and T8520 0304910 - page 38

Navistar / Caterpillar displays T8065 base/premium) 0304900 - page 38



For more advice about extensions of these systems with a second and third camera, please contact Orlaco.

Set CornerEye

1. Set CornerEye HD

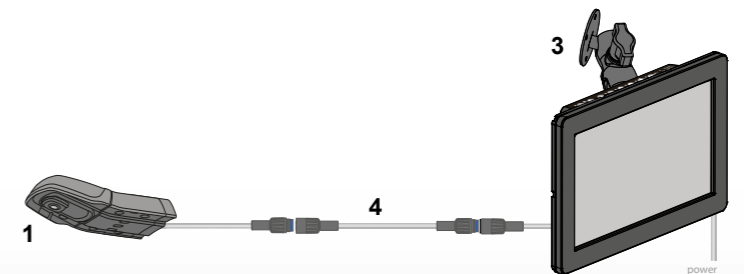
0400040 - page 37

a. Camera HMOS 180° incl. CornerEye bracket

b. Monitor HLED 10"

c. Monitor bracket 105mm

d. GMSL cable 3m



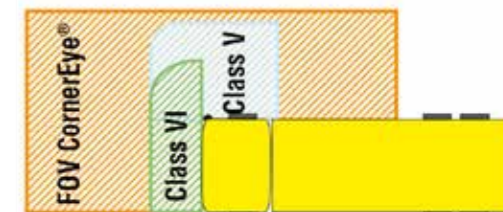
Note: Can not be extended with extra cameras.

CornerEye covers field of vision Class V & VI with one camera



Get excellent view on blind spots around trucks with the revolutionary new CornerEye camera monitor system. Ultimate digital technology and effective application come together in this unique vision system. The system has a wide angle lens that, combined with the latest technologies, delivers a field of vision of 270°. CornerEye covers the obligatory Class V & VI and even beyond, increasing your vision.

- HD camera and 10" HD monitor
- 270° field of vision
- Real time: zero latency
- Shock and vibration proof
- Ruggedized design
- Designed to comply with automotive requirements
- Camera IP69K watertight
- Short mounting time
- Custom made bracket per brand on request



0400040 Set CornerEye

CornerEye offers a complete view of 270° of the area around the cabin.

- Including HMOS GMSL camera with bracket, 10" monitor with A pillar bracket and GMSL cable.

The qualifications of our Digital Cameras

- High resolution CMOS rolling shutter
- 1280 x 960 video image
- Light sensitivity 0.1 lux
- Excellent impact- and vibration-resistance
- Improved EMC-standards
- Automotive molding-filled housing, watertight IP69K according to DIN 40050-9
- Operating temperature between -40°C to +85°C
- IP68 dust- and waterproof according to IEC 60529
- The camera has a 0,5m coax cable including a GMSL waterproof molded 4p male connector



Cameras HMOS

Compact, industrial high definition GMSL camera.

Type	Art. no.
30°	0185040
60°	0185030
90°	0185020
120°	0185010
180°	0185000

• Including camera bracket (1000499)

Monitor HLED

- Automotive TFT liquid crystal display module, LED backlight
- 1m multi cable (power) open wired, 1m multi cable (video) including 4p molded female GMSL connector
- Coax GMSL video input
- 1280 x RGB x 800 video image



0224010 Monitor 10" HLED MR1

0224000 Monitor 10" HLED
• Only compatible with CornerEye

GMSL cable

Designed for use with HMOS GMSL cameras.



0311000	1m	0311010	2m
0311020	3m	0311030	5m
0311040	7,5m	0311050	8m
0311060	9m	0311070	11m
0311080	16m	0311090	21m

GMSL switcher

Inputs and power supply for a maximum of 4 HMOS GMSL cameras.

- Cameras can be switched over automatically with a HLED MR1 monitor



0404240 Switcher GMSL - 4 channel

Monitor brackets

- Suitable for Monitor 10" HLED.



0402610 Monitor Bracket 105mm

0401290 Monitor Bracket 127mm
• Dashboard mounting

2015740 Clamp unit with ball joint
• Accommodates rails from ø 12,7mm to 31,75mm.

CornerEye Parts

0185610 Set GMSL camera with bracket
• Including camera HMOS 180° and extension bracket.



0402620 Camera bracket
• GMSL Camera not included

1000499 Digital Camera bracket



Or design your system yourself

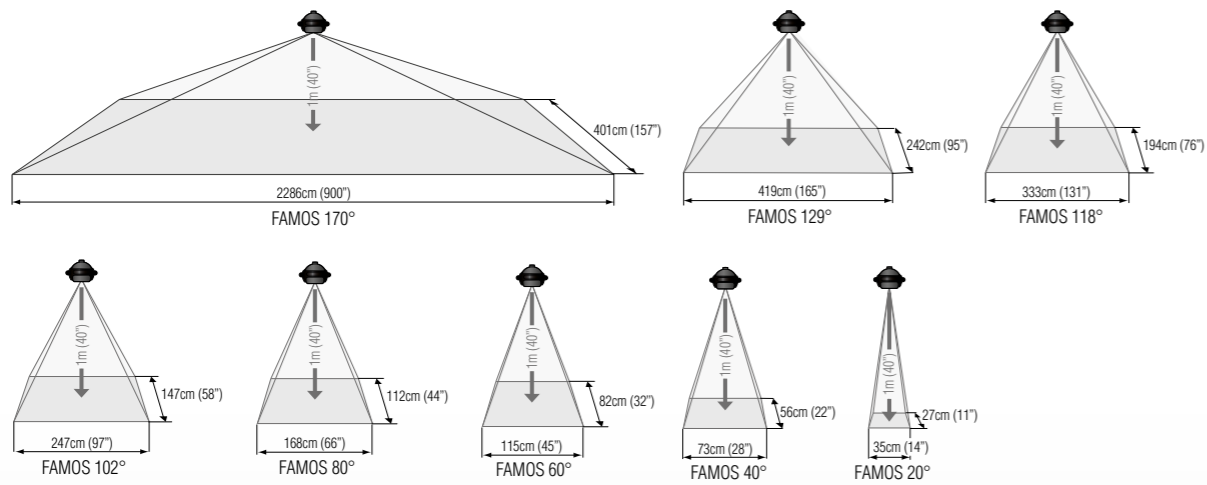
- Step 1:** Select your camera
 - Step 2:** Select your desired cable
 - Step 3:** Select your monitor
 - Step 4:** Select the required options
- It is also possible to configure your system online on our website: www.oralaco.com

Whatever you select, the system can be easily installed and is plug-and-play.

Note: For two or more cameras a Switcher, Y-split cable or MultiView Box and additional cables are required. Contact us for support.

The qualifications of our FAMOS Compact Cameras

- Next generation CMOS sensor
- Light sensitivity 0.05 lux
- Integrated *Safety ticker* to show that camera is running and active
- Optimized impact- and vibration-resistance
- Chemically hardened lens
- Automotive molding-filled housing, watertight IP69K according to DIN 40050-9
- Improved EMC-standards
- Operating temperature between -40°F to +185°F
- Heated lens glass, therefore no problems with condensation or frost
- Fixed lens
- IP68 dust- and waterproof according to IEC 60529
- The camera has a 0,5m cable including a waterproof molded 4p male connector



Cameras FAMOS

Type	Art. no. NTSC
20°	0171160
40°	0171150
60°	0171140
80°	0171130
102°	0171120
102° MIRROR	0171240
118°	0171110
118° MIRROR	0171230
129°	0171100
170°	0171170

Cameras FAMOS MIRROR SW

Camera with mirrored image and guiding lines.

Type	Art. no. NTSC
102° MIRROR	0171260



Cameras FAMOS IR LED

Day-night camera including 4 High Power Infrared LEDs 850nm. The IR LED's will be automatically activated. Based on the output of the CMOS sensor the IR illumination value will be set to ensure the best possible image.

Type	Art. no. NTSC
80°	0171630
118°	0171620
118° MIRROR	0171910

- With 1m cable including a waterproof molded 7p male connector
- UV-transparent front cover



Mounting means - Compact Cameras

8400610 Compact Camera bracket
Assembly set for Compact Camera.



0401270 Camera bracket

Compact bracket specially designed for the Compact Camera.

- Cap can be resprayed in the color of the vehicle
- Including mounting kit
- Compact Camera is not included



0401210 Camera bracket with extension

1.6" extended bracket.

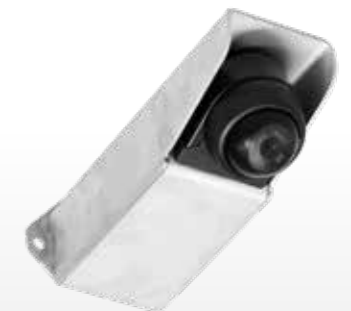
- Including mounting kit
- Rubber extension part
- Compact Camera is not included



0402280 Camera Extension 155 Stainless steel

Extended heavy duty bracket specially designed for Rearview.

- 6.1" extension
- Including camera bracket (0401270)
- Stainless steel housing
- Including mounting kit
- Compact Camera is not included



The advantages of Orlaco cables

- All cables are specially developed by Orlaco
- ADR approved
- Special cables are available for various circumstances
- Resistant to oil and petrol
- Watertight cable connectors
- Operating temperature -40°F to +185°F



Multi cable standard

This standard cable can be used if no special requirements like mechanical protection or dynamic movement of the cable is needed.

Including 4p molded connectors:

0301960	3.3ft (1m)	0301870	6.6ft (2m)
0301890	9.8ft (3m)	0301880	16.4ft (5m)
0301910	24.6ft (7,5m)	0301930	26.2ft (8m)
0301950	29.5ft (9m)	0301900	36ft (11m)
0301920	52.5ft (16m)	0301940	69ft (21m)

Including 7p molded connectors:

0304420	1.6ft (0,5m)	0304260	6.6ft (2m)
0304410	19.8ft (6m)	0304610	36ft (11m)
0304620	52.5ft (16m)	0305030	69ft (21m)

Dynamic cable

Designed for dynamic use.

- Soft cover with small bend radius

Including 4p molded connectors:

0304371	1.6ft (0,5m)	0304281	3.3ft (1m)
0305341	11.5ft (3,5m)	0304341	16.4ft (5m)
0304381	19.7ft (6m)	0304391	26.2ft (8m)
0304431	29.5ft (9m)	0304441	32.8ft (10m)
0301811	36ft (11m)	0304451	39.4ft (12m)
0301731	49.2ft (15m)	0301831	65.6ft (20m)

Including 7p molded connectors:

0304460	9.8ft (3m)	0304470	13.1ft (4m)
0304480	16.4ft (5m)	0304490	26.2ft (8m)
0304560	29.5ft (9m)	0304570	32.8ft (10m)
0304580	36ft (11m)	0304590	55.9ft (17m)



Truck- and Trailer cables

- Oil and petrol resistant
- IP67 Watertight

0304020 Cabin cable 26.2ft (8m)

Cable suitable for lead through on truck.

- Fitted with 4p molded male and 10p Harting female connectors
- Including extra mounting housing

0301780 Cabin 2Cam cable 26.2ft (8m)

Two camera cable suitable for lead through on truck.

- Fitted with two 4p molded male and 10p Harting female connectors
- Including extra mounting housing

0303630 Spiral cable 11.5ft (3,5m)

11.5ft spiral cable between truck and trailer.

- Fitted with 10p Harting connectors
- Double coax

0301770 Trailer cable 6.6ft (2m)

0303740 Trailer cable 82ft (25m)

Cable suitable for lead through on trailer.

- Fitted with 4p molded female and 10p Harting male connectors

0301790 Trailer 2Cam cable 1.6ft (0,5m)

Two camera cable suitable for lead through on trailer.

- Fitted with two 4p molded female and 10p Harting male connectors

0303870 Swivelling arm cable 36ft (11m)

Cable suitable for lead through on truck/cabin.

- Fitted with 4p male connector and 10p Harting female connector
- Multi cable fitted with 32.8ft (10m) protection hose

0303880 Swivelling trailer cable 69ft (21m)

Cable suitable for lead through on trailer.

- Fitted with 4p female connector and 10p Harting male connector
- Multi cable fitted with 4.9ft (1,5m) protection hose

0403770 Cable set for truck - trailer

Cable set for connecting the camera on the trailer.

This set contains:

- 0304020 Cabin cable 26.2ft (8m)
- 0303630 Spiral cable 11.5ft (3,5m)
- 0303740 Trailer cable 82.25 (25m)





Cable extension sets

0303960 Cable extension rigid - drawbar trailer (manual)

Two cables suitable for lead through on rigid and drawbar trailer.

This set contains:

- 52.5ft (16m) multi cable 4p male - 10p female Harting
- 68.9ft (21m) multi cable 4p female - 10p male Harting
- Including push button (for manually switching between cameras)



0303970 Cable extension rigid - drawbar trailer (automatic)

Two cables suitable for lead through on rigid and drawbar trailer.

This set contains:

- 52.5ft (16m) multi cable 7p male - 10p female Harting
- 68.9ft (21m) multi cable 4p female - 10p male Harting
- Including Trailer switcher (Switches automatically on connection)



0303980 Cable extension rigid - center axle trailer (manual)

Two cables suitable for lead through on rigid and center axle trailer.

This set contains:

- 52.5ft (16m) multi cable 4p male - 10p female Harting
- 68.9ft (21m) multi cable 4p female - 10p male Harting
- Spiral cable 11.5ft (3.5m), 10p Harting connectors
- Including push button (for manually switching between cameras)



0303990 Cable extension rigid - center axle trailer (automatic)

Two cables suitable for lead through on rigid and center axle trailer.

This set contains:

- 52.5ft (16m) multi cable 7p male - 10p female Harting
- 68.9ft (21m) multi cable 4p female - 10p male Harting
- Spiral cable 11.5ft (3.5m), 10p Harting connectors
- Including Trailer switcher (Switches automatically on connection)

The possibilities offered by Orlaco LED monitors

- Automotive TFT liquid crystal display module, LED backlight
- Operating temperature between -40°F to +185°F
- Impact and vibration resistance meet the stringent requirements
- Power protected against:
 - Induction voltages
 - Load dumps
 - Over- and undervoltage
- Mirror image setting
- High resolution pixel WVGA 800xRGBx480
- Brightness automatically adjusts to the ambient light
- Option of a marker line per camera

- on the screen for the optimum determination of distance
- Integrated sun visor
- IP67 according to IEC 60529
- Full On-Screen-Display (OSD) in 12 languages
- Watertight molded connectors

7" Monitors LEDD

- For double DIN slide opening in the dashboard

0208203 Monitor 7" LEDD

- 6.5ft (2m) multi cable (power) open wired, 6.5ft (2m) multi cable (video) including 4p molded female connector
- Input Voltage 12...60V/DC +/-10%

0208232 Monitor 7" LEDD Serial

- 19.7ft (6m) multi cable (power) open wired, 19.7ft (6m) multi cable (video) with 7p female connector
- Input Voltage 18...30V/DC +/-10%
- For serial connection (MultiView box, on page 37)

0208242 Monitor 7" LEDD CAN

- 6.5ft (2m) multi cable (power) open wired, 6.5ft (2m) multi cable (video) including 4p molded female connector
- Input Voltage 12...60V/DC +/-10%
- Two dedicated wires are suitable for CAN bus communication

0208371 Monitor 7" LEDD CAN SRD

- 19.7ft (6m) multi cable (power) open wired, 19.7ft (6m) multi cable (video) with 7p female connector
- Input Voltage 12...60V/DC +/-10%
- Specially designed for RadarEye systems (see page 34-35)

12" Monitors

- Including user-adjustable 7.5" mounting bracket

0411000 Monitor 12" RLED

- 13ft (4m) multi cable (power) open wired, 13ft (4m) multi cable (video) including 4p molded female connector
- Input Voltage 12...30V/DC +/-10%

0411130 Monitor 12" RLED Serial

- 19.7ft (6m) multi cable (power) open wired, 19.7ft (6m) multi cable (video) with 7p female connector
- Input Voltage 18...30V/DC +/-10%
- For serial connection (MultiView box, on page 37)

0411200 Monitor 12" RLED CAN

- 19.7ft (6m) multi cable (power) open wired, 19.7ft (6m) multi cable (video) with 7p female connector
- Input Voltage 18...30V/DC +/-10%
- Two dedicated wires are suitable for CAN bus communication

0411300 Monitor 12" RLED CAN SDR

- 19.7ft (6m) multi cable (power) open wired, 19.7ft (6m) multi cable (video) with 7p female connector
- Input Voltage 12...30V/DC +/-10%
- Specially designed for RadarEye systems (see page 34-35)





Mounting means - LEDD monitor

0400610 Monitor mounting bracket

For assembly of the Monitor 7" LEDD.

- ABS + aluminium

0400600 Monitor mounting bracket flexible

For flexible assembly of the Monitor 7" LEDD.

- ABS + aluminium



Camera extension brackets

Specially designed for the Compact Camera. Matches the hole pattern of the Compact Camera bracket.

- Stainless steel

0402250 Camera extension 6.1" (155mm)

0402270 Camera extension 9.5" (250mm)



0403310 Shock-absorbers for Compact Camera

In situations where shock absorption plays a major role, we recommend that the specially developed shock absorbers are used when installing the Compact Camera.



0402320 Protective cover

Cover specially designed for the Compact Camera.

- Stainless steel housing

0402360 Aerodynamic cover

Cover specially designed for the Compact Camera.

- Stainless steel



Cable disconnection sets

0351070 7p

- Watertight
- With caps

0351100 10p harting

- Watertight
- With caps

Digital video recorder

Digital video recorder with one camera input and one video output

0000300 DVR one channel

- Can be used with a compact camera (4p) or serial camera (7p)
- Video loop function
- 9-30V/DC
- Automatic timestamp
- Including 32GB SDHC-card for max 72 hours of storage and SD-card reader



Spare parts 10p Harting

1399510 Mounting housing

1399610 Female insert

1399500 Housing

1399600 Male insert

2200250 Reducer

2205200 Cable gland



Video distributor

0407001 Orlaco video distributor

For connecting a second and third Orlaco monitor.

- 7 - 32 V/DC
- Cables and connectors are not included



Power supply

0004601 Power supply 9-36V

- Maximum cable length 656ft (200m)
- Power input 9-36V/DC
- Power output 12V/DC



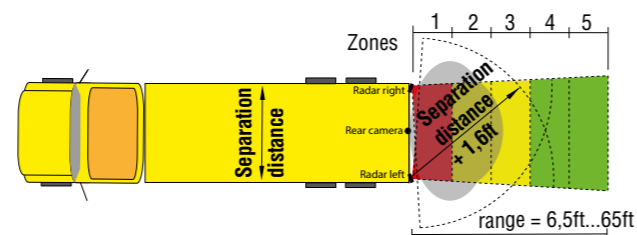
RadarEye unites visibility and active detection



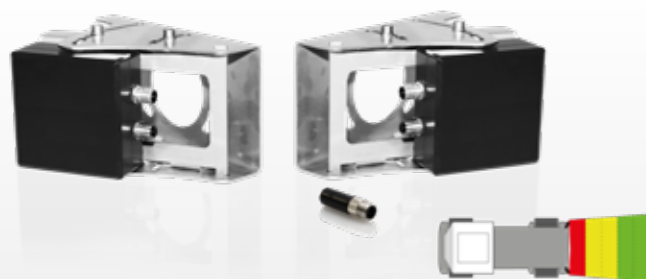
Orlaco has developed this radar unit in addition to the camera-monitor systems. By combining the vision solution with an active signaling system, RadarEye offers additional safety and efficiency.

RadarEye is an integrated active view system designed to detect and see objects in zones obscured from the driver's view. The radar system detects stationary as well as moving objects in a designated coverage area. With this view system the driver is actively warned with audible tones that increase in rate as objects come closer. When an object is detected it can be seen on the monitor and the driver can respond immediately. This prevents damage to the drivers truck and any other equipment he may reverse into. The radar units have a rugged design, are shockproof, waterproof and is not influenced by the environment, such as snow, rain, mud and or temperature changes.

- RadarEye can be used on various trucks
- RadarEye is capable of visualizing the radar-zones on the display. As soon as an object enters the zone it will activate colored dots (default setting) or a transparent visualization (standard/custom preset settings) to make the driver aware of the potential danger
- 6.5...65ft detection area, divided in 5 equally sizes segments
- Separation distance: 3.3ft-13.1ft (1-4m) (configurable)
- Antenna beam horizontal: 70°(typ.), vertical: 11°(typ.)
- Operating temperature between -40°F to +185°F
- Obstacle reaction delay 50ms
- Can be connected to an Orlaco monitor or third party monitor with PAL/NTSC input
- RadarEye can be extended with multiple sensor and camera units for all around detection and visibility
- Please contact Orlaco for advice and installation



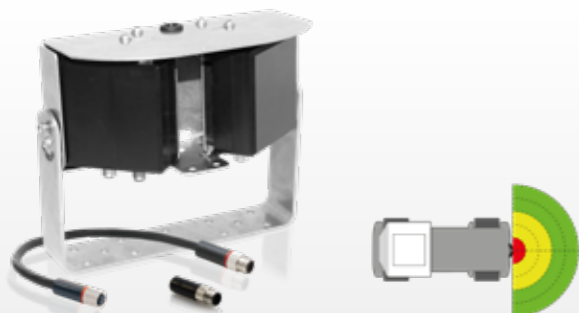
[Check our demo RadarEye videos on the Orlaco YouTube channel.](#)



RadarEye sets

0403120 Set SRD Corner Rear
Active Rearview system for corner mounting.

- Including SRD sensors, brackets and terminator
- Interface Box CAN/SRD/camera is required
- Cables, Camera and Monitor CAN SRD are not included



0403100 Set SRD Center Rear
Active Rearview system for center mounting.

- Including SRD sensors, bracket, cable master-slave (0301080) and terminator
- Interface Box CAN/SRD/camera is required
- Cables, camera and monitor CAN SRD are not included

RadarEye Interface boxes

0256010 Interface Box CAN/SRD/camera

The Interface Box is designed to connect SRD sensors to camera and CAN SRD monitor.



0504820 Interface Box with Ext. speaker CAN/SRD/camera

The Interface Box is designed to connect SRD sensors to a camera, CAN SRD monitor and external speaker.

- Set consists of: External speaker and Interface Box
- Sound pressure speaker: 85dB (+/-3dB) distance 3.3ft



RadarEye Interface box for existing monitors

0404700 SRD Interface Box with ext. speaker

The Interface Box is designed to connect the RadarEye components to a non-radar third party monitor (PAL/NTSC) or existing standard camera system.

- Set consists of: Interface box, external speaker, adapterplug and open wired multicable with 8p connector.
- Sound pressure speaker: 85dB (+/-3dB) distance 1m



RadarEye Cables

Cable M12 Green

Connection cable between Interface box and master SRD sensor or connection cable between slave SRD sensor and next SRD sensor.

0301051	9.8ft (5m)	0301061	32.8ft (10m)
0301071	49.2ft (15m)	0301121	65.6ft (20m)
0301131	82ft (25m)	0301141	98.5ft (30m)



Cable M12 Master-Slave Red

Connection cable between master SRD sensor and slave SRD sensor.

0301081	0.8ft (0,25m)	0301021	3.3ft (1m)
0301031	13.1ft (4m)	0301041	26.2ft (8m)
0301091	52.5ft (16m)		



RadarEye Brackets

0401330 Bracket SRD Sensor Corner Rear

Mounting bracket for SRD Sensor for corner mounting

- Stainless steel
- SRD sensor not included



0401320 Bracket SRD Sensor Center Rear

Mounting bracket for SRD Sensor for center mounting

- Stainless steel
- SRD sensors not included





Y-split and power cables

0304081 Y-Split cable LEDD

- With two 4p molded female connectors (video) and open wire cable (power)
- For connections 2 to 4 cameras (with Switcher)



8975171 Cable LEDD 2m

- 2m multi cable (power) open wired, 2m multi cable (video) including 4p molded female connector



8976330 Cable Serial 6m

A non-serial LEDD monitor can be connected to the MultiView Box II (0405100) via this cable.

- 6m multi cable (power) open wired, 6m multi cable (video) including 7p female connector

Connectors

1310841 Connector 4p female Gold

This connector is recommended for the multi cable 6mm.

1312001 Connector 4p male Gold

This connector is recommended for the multi cable 6mm.

1310850 Connector 4p female PG9 Gold

This connector is recommended for the dynamic cable 9mm.

1312050 Connector 4p male PG9 Gold

This connector is recommended for the dynamic cable 9mm.

Adapter plugs

0357500 Adapter plug 4p male - 7p female

0357510 Adapter plug 4p female - 7p male

Switcher for third party monitors

0404300 Switcher 4 Cam, EXT switch wires

This video switcher for third party monitors has 4 video inputs and 1 video output. The power supply is feeded by the monitor input. The video output will be displayed on the monitor. The switch wires can be used to choose one of the video inputs to be displayed on the monitor

- Including 12.6ft (3.85m) power cable



Switchers

Input and power supply for three cameras and in combination with a Y-split cable: four cameras.

- Cameras can be switched over automatically or manually

0404040 Switcher UNI

- Waterproof IP54 according to IEC 60529
- 4p output for monitor

0404080 Switcher UNI IP67

- Waterproof IP67 according to IEC 60529
- 4p output for monitor

0404061 Switcher Serial IP67

- Waterproof IP67 according to IEC 60529
- 7p output for monitor
- Only in combination with a Serial monitor



0405600 Trailer switcher

For connecting the Rearview cameras to the rigid and trailer

- Switches automatically on connection
- Including 16m multi cable 7p - 10p Harting



The MultiView box is an advanced video imaging system for up to 4 cameras. There are many possibilities of different split views in 5 selectable video channels.

- Stainless steel housing
- A MultiView box can only be connected to an Orlaco Serial Monitor or via the Serial Cable 19.7ft (6m) (8976330) when a non-serial monitor is used

0405100 MultiView box II

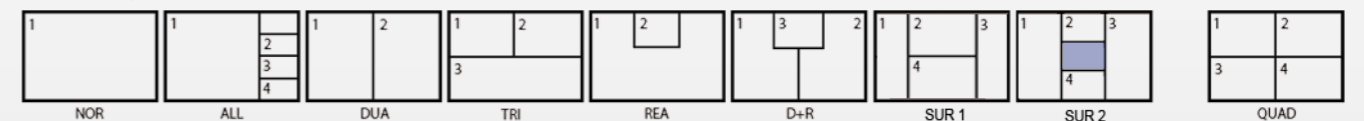
- 4 camera inputs (4x Compact Camera)

0405200 Multiview box II dual mode

- Pre-programmed splitscreen
- Including adapter plug 4p male - 7p female



Preset view options for channel 1-4:



Adapter cables

To connect an Orlaco Compact Camera to a third party monitor.



0304000 Adapter cable 4pF - 4pF



0304050 Adapter cable 4pM - 4pM



0303770 Adapter cable 4pF - Cinch / power wires



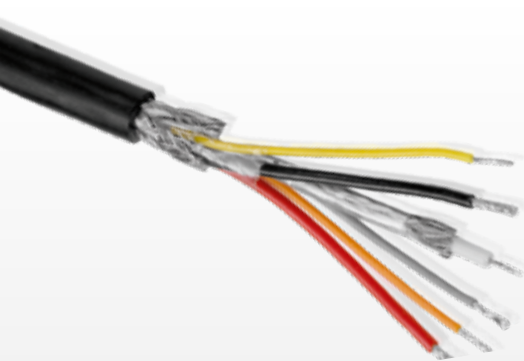
0303860 Adapter cable 4pF - BNC



0304910 Adapter cable 4pF - Navistar/Caterpillar display T8510 & T8520



0304900 Adapter cable 4pF - Navistar/Caterpillar display T8065 base/premium



Cable per 3.3ft (1m) (connectors not included)

- 1220170 Multi cable 1x coax, 5x wires
- 1220250 Multi cable 1x coax, 12x wires PUR
- 1220350 Multi cable 2x coax, 5x wire PUR
- 1220600 Dynamic cable 1x coax, 5x wire PUR
- 1220900 Power cable 7x wire AWG20
- 1222000 Coax cable 75 OHM RG59

Any required connectors can be ordered separately. (see page 36)

ISO Certifications

All Orlaco products are manufactured according to the latest *Quality Management System Standards*:

ISO/TS 16949
ISO 9001

Additionally, all Orlaco products are manufactured according to the latest *Environmental Management System Standard*:

ISO 14001



Type-Approval Certifications

Regulations 10 and 46 are used to determine the Type-Approval for **EMC** and **Indirect Vision** (Mirror Directive). **R46** describes mirror specifications for truck compliancy. Orlaco Frontview systems meet all these requirements. **R10** describes the **EMC** behavior of the Orlaco Camera and Monitor systems.

TÜV Automotive Certifications

The *European Agreement concerning the International Carriage of Dangerous Goods by Road (ADR)* demands additional equipment. Orlaco Camera and Monitor systems and connection cables comply with these regulations.

Compliance

Our Camera and Monitor systems are produced entirely in line with the **CE-marking** and the most recent applicable directives and product standards (e.g. **EMC, FCC, Machinery, R&TTE**). Orlaco products are compliant with **RoHS** and **REACH**.

